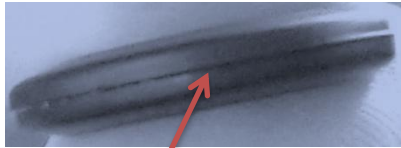


# How to identify a melamine button:

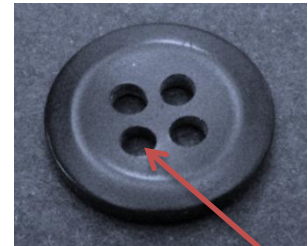
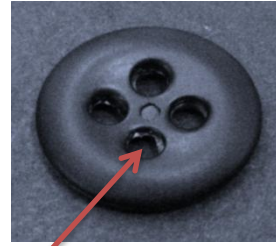
**1. Does the button have a seam around the outside edge?**



Melamine buttons have a seam

Non-melamine do not have a seam. If unsure, go to step 2.

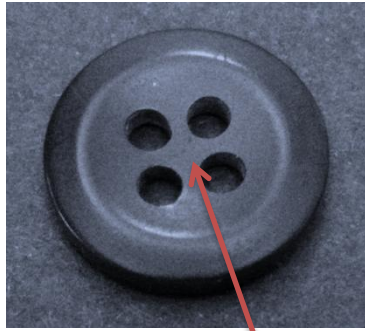
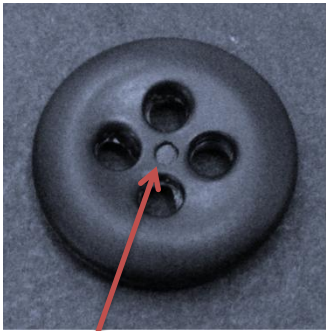
**2. Does the button have “flash” (thin waste material) around the inside of the holes?**



Melamine buttons may some have “flash” around the inside of the holes

If no “flash” or unsure, go to step 3

**3. Is there a “knock-out pin” mark in the center of one side of the button?  
(you might need to cut the button off the garment to determine this)**

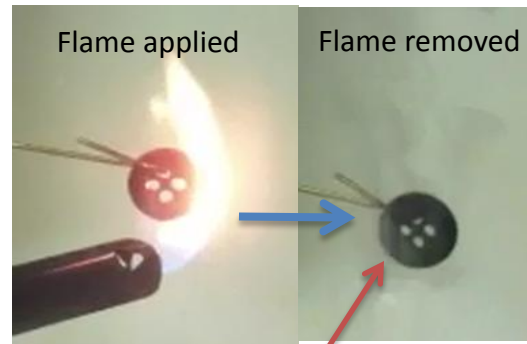


The “knock-out pin” mark indicates that this button is an EMSIG melamine button

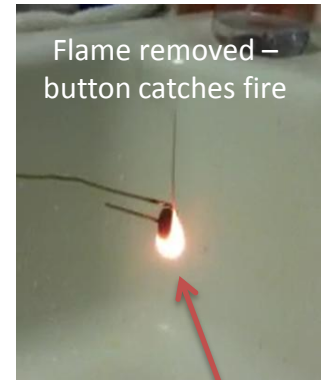
If no “knock-out pin” mark, go to step 4

**4. Does the button catch fire?**

**(only burn buttons in a flame hood or well-ventilated area keeping both the button and flame at a safe distance. Never breathe in the fumes given off)**



Melamine buttons will never catch fire



Cheaper materials will catch fire, crack, and/or melt.